

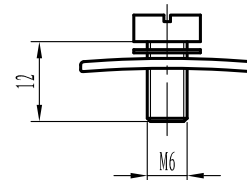
Data-Sheet-Fixed Capacitor

CKT2000/1.8/105

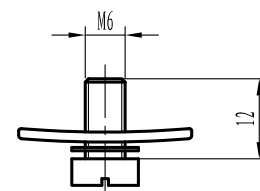
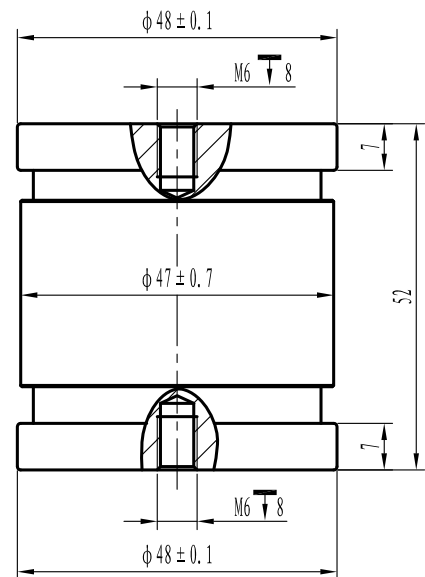
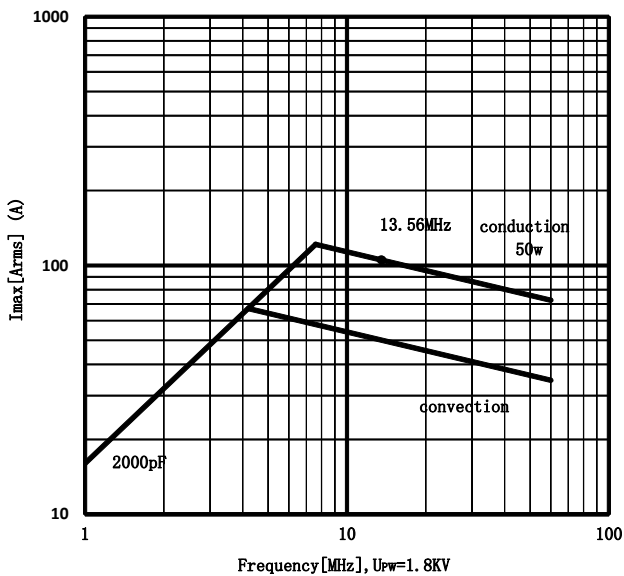


www.glvac.com

| Specification | |
|--|-----------|
| Capacity C_{max} (nominal) | 2000pF |
| Voltage (Peak Test U_{pt} /Peak Working U_{pw}) | 3kV/1.8kV |
| Capacity tolerance | 5% |
| Max. Current I_{max} at 13.56MHz with | 105Arms |
| Conduction Cooling | 50W |
| Net Weight | 0.4kg |



I_{max} at 25 °C ambient and 125 °C surface for convection and conduction (50w) cooling



UNLESS OTHERWISE SPECIFIED:

≤30: ±0.5 30~400: ±1.2 ≥400: ±2.5 ∠: ±1°

Rev: 00

Page1/1

Issue: 02-Sep.-2020